

UNEMPLOYMENT INSURANCE WEEKLY STATISTICS

State of Oregon
EMPLOYMENT DEPARTMENT

UI Programs

Janet Orton

(503) 947-1679

janet.l.orton@state.or.us

www.WorkingInOregon.org

LABOR FORCE DATA		This Month	Last Month	Last Year
		Jun2010	May 2010	Jun 2009
Oregon Civilian Labor Force		1,952,984	1,959,189	1,971,818
Total Number Unemployed		202,944	209,933	223,474

UNEMPLOYMENT RATES (CIVILIAN) (%)		Labor Force & Rate Data: www.QualityInfo.org		
Total Unemployment:	Oregon	10.4%	10.3%	11.6%
	National	9.6%	9.3%	9.7%
Seasonally Adjusted:	Oregon	10.5%	10.6%	11.6%
	National	9.5%	9.7%	9.5%

Week # :	29
Ending:	July 24, 2010

	THIS WEEK		LAST WEEK		This Month	Last Month	Last Year
	2010	2009	2010	2009	June 2010	May 2010	June 2009
UNEMPLOYMENT RATES (%)							
Insured Unemployment: Oregon	4.78	6.45	4.98	6.68	5.94	5.14	6.83
EB Trigger ¹	5.21	6.94	5.30	7.03			
Adjusted Insured Unemployment	7.24	9.23	7.37	9.32			
National Average TUR ²	10.60	12.10	10.60	12.10			
REGULAR CLAIMS (UI, UCFE, UCX)					This Month	Last Month	Last Year
					June 2010	May 2010	June 2009
Initial Claims (Excl. Liable)³	7,327	10,219	8,883	10,761	41,676	34,494	48,368
Oregon - New	3,132	4,774	3,879	4,919	14,574	12,565	20,432
Additional	3,730	4,994	4,571	5,337	24,939	20,212	26,140
Interstate - Agent	465	451	433	505	2,163	1,717	1,796
Interstate - Liable	221	272	216	279	977	820	1,159
Weeks Claimed (Excl. Liable)³	76,440	108,461	79,679	112,523	401,966	346,891	459,620
Oregon	72,551	104,045	75,761	108,003	383,864	329,672	441,830
Interstate - Agent	3,889	4,416	3,918	4,520	18,102	17,219	17,790
Interstate - Liable	2,528	3,263	2,531	3,295	12,728	11,071	13,087
New Combined Wage Claims	113	196	139	182	630	675	7,419
Non-monetary Determinations & Redeter.	2,990	2,478	2,801	3,051	10,645	13,274	11,585
PAYMENTS: REGULAR BENEFITS							
First Payments	4,847	4,334	3,056	5,693	15,841	13,517	16,967
Payments Issued	69,394	102,505	71,719	106,171	374,841	329,104	446,462
Gross Amount of Payments (\$) ^{3,5}	\$19,665,365	\$32,092,514	\$20,410,241	\$33,252,057	\$107,679,210	\$94,545,407	\$140,163,484
Regular Benefit Payments (\$)	\$18,420,565	\$29,682,314	\$19,025,441	\$30,765,282	\$99,272,157	\$86,887,907	\$129,734,134
Regular Federal Additional Compensation (\$) ⁴	\$1,244,800	\$2,410,200	\$1,384,800	\$2,486,775	\$8,407,053	\$7,657,500	\$10,429,350
Average Check Amount (\$) ^{3,5}	\$283.39	\$313.08	\$284.59	\$313.19	\$287.27	\$287.28	\$313.94
Number Exhausting Benefits	2,182	3,484	2,946	4,602	11,817	9,681	12,645
TRUST FUND							
Balance (in Millions) (\$)	\$ 699.21	\$ 1,406.36	\$ 720.40	\$ 1,479.54	\$ 756.08	\$ 855.54	\$ 1,525.34

¹ EB Trigger Graph: <http://www.employment.oregon.gov/EMPLOY/BUDGET/UI/current/IUR.pdf>

² NTUR: Unemployment Compensation Amendment Of 1992 specifies that a 2 month average NTUR be used to determine duration levels.

³ Excludes WORKSHARE program

⁴ Federal Additional Compensation program start 3/2/2009 - Adds and additional \$25 to all claims

⁵ Includes FAC Payments

For current and historic UI reports, visit:

<http://www.oregon.gov/EMPLOY/BUDGET/UI/index.shtml>

Week # :	29
Ending:	July 24, 2010

	This Week	Last Week	Cumulative
EXTENDED BENEFITS (EB)			
YTD			
Initial Claims (Excl. Liable)	4,415	6,188	51,571
Weeks Claimed (Excl. Liable)	38,027	34,498	283,796
Gross Amount of Payments (\$) ⁵	\$13,301,181	\$12,049,858	\$98,245,111
EB Benefit Payments (\$)	\$13,193,256	\$11,156,258	\$91,773,761
EB Federal Additional Compensation (\$) ⁴	\$107,925	\$893,600	\$6,471,350
Number Exhausting Benefits	479	547	6,513

Oregon HEB Trigger "ON" 02/15/2009.

http://www.workforcesecurity.doleta.gov/unemploy/claims_arch.asp

Misc Additional Benefits (AB)			
Initial Claims (Excl. Liable)	2	0	71
Weeks Claimed (Excl. Liable)	27	56	2,348
Gross Amount of Payments (\$)	\$0	\$0	\$0
Number Exhausting Benefits	\$0	\$0	\$0

TRADE ADJUSTMENT ACT (TRA)			
Training Plans	3	12	934
Initial Claims	122	118	4,123
Weeks Claimed	160	101	714
Gross Amount of TRA Payments (\$) ⁵	\$70,490	\$4,254	\$251,741
TRA Benefit Payments (\$)	\$66,415	\$1,679	\$233,616
TRA Federal Additional Compensation (\$) ⁴	\$4,075	\$2,575	\$18,125
Certifications	1	3	33
Gross Amount of TAA Payments (\$)	\$3,910	\$11,353	\$94,756

WORKSHARE PROGRAM (WS)			
Initial Claims	35	51	4,185
Weeks Claimed	2,259	1,889	86,466
Gross Amount of Payments (\$) ⁵	\$267,264	\$211,210	\$9,944,605
WS Benefit Payments (\$)	\$219,389	\$173,810	\$8,065,655
WS Federal Additional Compensation (\$) ⁴	\$47,875	\$37,400	\$1,878,950
# of Workshare Plans	642	653	INA

TRAINING UI (TUI)			
Applications Accepted	102	49	4,420
Approved	96	42	4,131
Weeks Claimed	4,856	4,832	156,459
Gross Amount of Payments (\$) ⁵	\$1,566,232	\$1,554,921	\$52,586,494
TUI Benefit Payments (\$)	\$1,453,557	\$1,442,971	\$48,722,633
TUI Federal Additional Compensation (\$) ⁴	\$112,675	\$111,950	\$3,863,861

ECONOMICALLY DISTRESSED WORKER TRAINING (E)			
Applications Approved	0	0	18
Weeks Claimed	7	6	186
Gross Amount of Payments (\$)	\$841	\$706	\$28,861

SUPPLEMENTAL UI for DISLOCATED WORKERS (SUI)			
Initial Claims	23	25	416
Weeks Claimed	316	292	4,505
Gross Amount of Payments (\$)	\$99,932	\$93,225	\$1,305,562

⁴ Federal Additional Compensation program start 3/2/2009 - Adds and additional \$25 to all claims

⁵ Includes FAC Payments

For current and historic UI reports, visit:



<http://www.oregon.gov/EMPLOY/BUDGET/UI/index.sht>

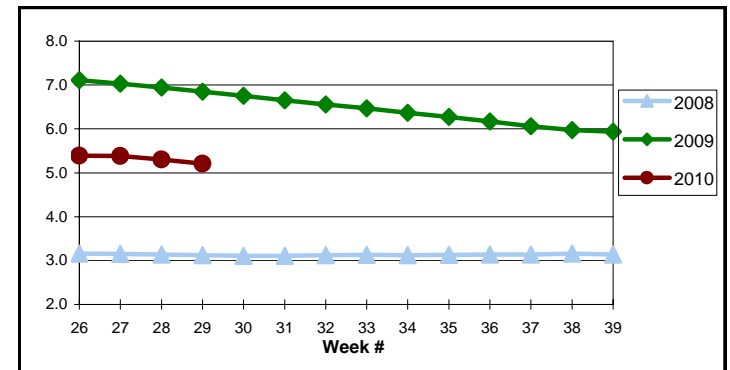


(503) 947-1679

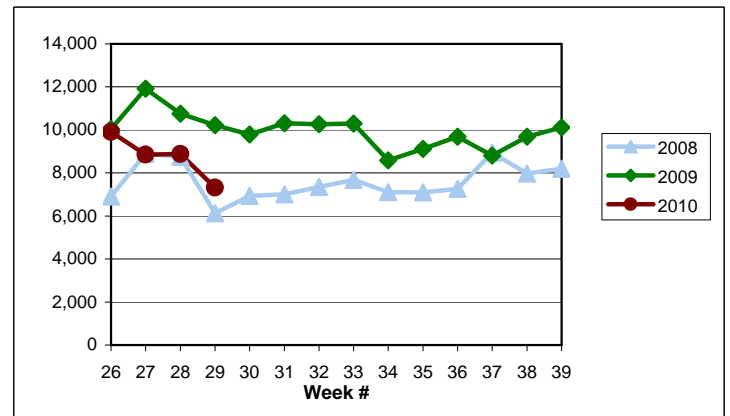


janet.lorton@state.or.us

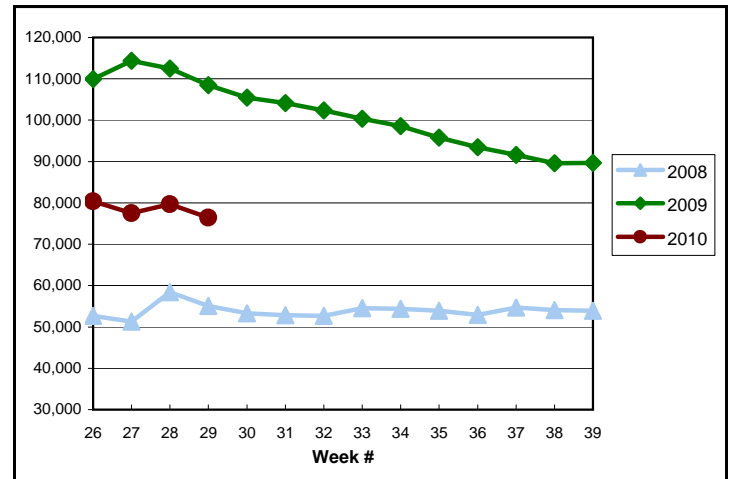
EB Trigger: 5.21



Regular Initial Claims: 7,327



Regular Weeks Claimed: 76,440



Week # : 29
Ending: July 24, 2010

	This Week	Last Week	Cumulative YTD
SELF EMPLOYMENT (SEA) MONTHLY			
		June '10	Cumulative
Referred		31	195
Enrolled		54	374
Completed		47	242
Weeks Claimed	98	633	4,495
Gross Amount of Payments (\$) 8	\$43,055	\$216,058	\$1,721,417
SEA Benefit Payments (\$)	\$40,555	\$203,133	\$1,620,817
SEA Federal Additional Compensation (\$) ⁴	\$2,500	\$12,925	\$100,600

⁴ These are MONTHLY counts; data in BOLD is weekly.

OREGON EXTENDED BENEFITS (OEB)			
Initial Claims (Excl. Liab)	1	0	88
Weeks Claimed (Excl. Liab)	5	0	596
Gross Amount of Payments (\$)	\$575	\$0	\$84,884
Number Exhausting Benefits	1	0	135

OEB Begins 10/04/2009

OREGON EXTENDED BENEFITS 2 (OEB2)			
Initial Claims (Excl. Liab)	72	81	16,379
Weeks Claimed (Excl. Liab)	13	38	66,512
Gross Amount of Payments (\$)	\$9,892	\$24,216	\$18,373,088
Number Exhausting Benefits	10	15	12,562

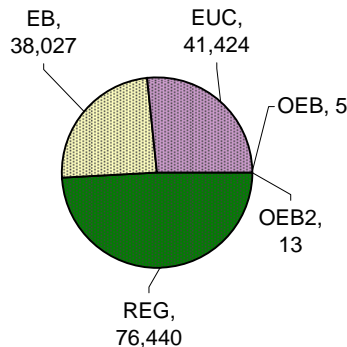
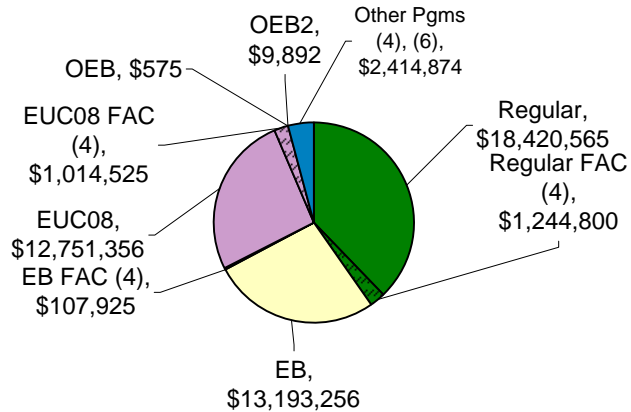
OEB2 Begins 03/22/2010

EMERGENCY UNEMPLOYMENT COMPENSATION 08 (EUC08)			
Initial Claims (Excl. Liab)	1,151	857	62,355
Weeks Claimed (Excl. Liab)	41,424	46,455	2,395,502
Gross Amount of Payments (\$) ⁵	\$13,765,881	\$15,091,868	\$806,969,604
EUC Benefit Payments (\$)	\$12,751,356	\$13,975,618	\$747,581,604
EUC Federal Additional Compensation (\$) ⁴	\$1,014,525	\$1,116,250	\$59,388,000
Number Exhausting Tier 1 Benefits	1,029	1,046	38,948
Number Exhausting Tier 2 Benefits	1,344	1,182	44,472
Number Exhausting Tier Z Benefits (14th week of Tier 2)	1,199	1,208	44,898
Number Exhausting Tier 3 Benefits	1,408	1,287	51,717
Number Exhausting Tier 4 Benefits	79	979	38,354

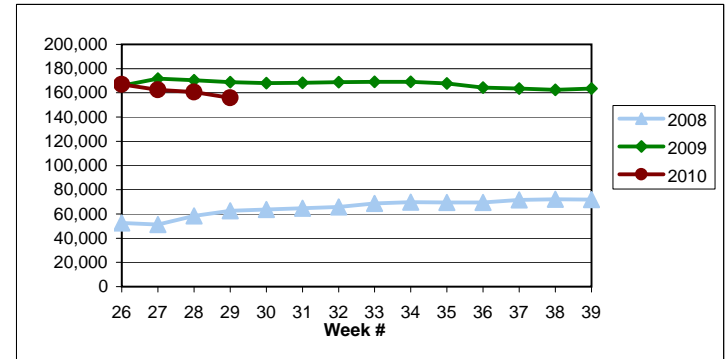
EUC begins 07/06/2008

Benefits Paid - By Program
Total: \$48,794,618

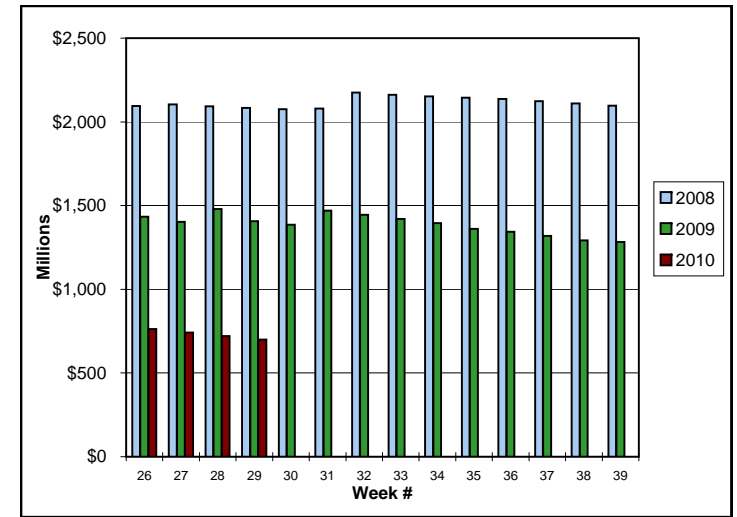
Weeks Claimed - By Program ⁷
Total: 155,909



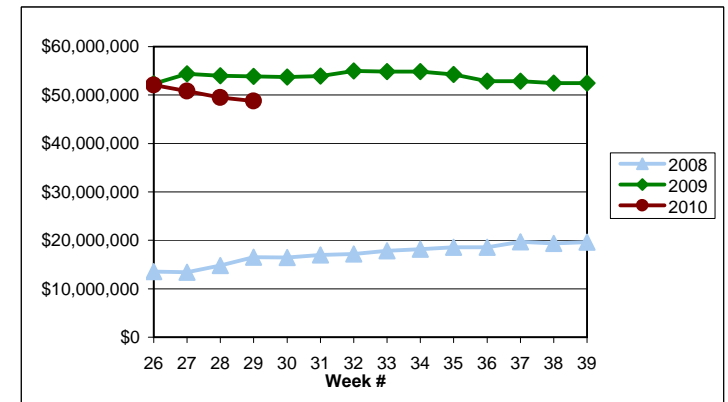
Total Weeks Claimed (Regular + EB + EUC + OEB): ⁷ 155,909



Trust Fund Balance: \$699.21 (in millions)



Total Benefits Paid: \$48,794,618 (4)



⁴ Federal Additional Compensation program start 3/2/2009 - Adds and additional \$25 to all claims

⁵ Includes FAC Payments

⁶ Other Programs Include AB, TRA, TAA, WS, TUI, SUD, SEA

⁷ Excludes Other Programs

